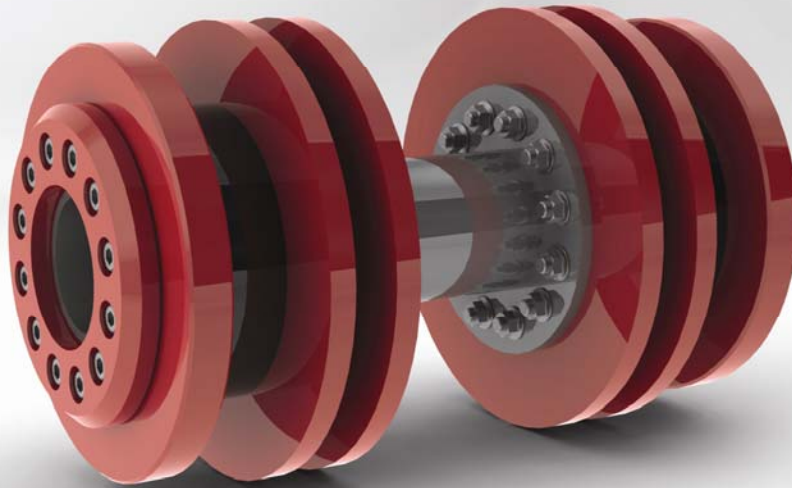




iNPIPE PRODUCTS

DATASHEET- BI-DIRECTIONAL DISC PIG RANGE



Product Description and Functions

iNPIPE PRODUCTS™ Bi-directional Pigs are manufactured using polyurethane guide and sealing discs. Accessories such as brushes, magnets, gauge plates, tracking housings, pluggable by-pass and jetting heads can be added.

iNPIPE PRODUCTS™ Disc Pigs can be utilised in many applications such as pipeline cleaning, flooding and de-watering, commissioning and de-commissioning.

iNPIPE PRODUCTS™ range of Bi-directional Pigs are available from 2" – 60".

Standard Features

- Bodies are manufactured from carbon steel
- Guide and Seal Discs are manufactured from Polyurethane (Polylast III as standard; Polylast V is also available)
- Towing eye at each end to facilitate removal
- Multi-bolt and Spindle bodied designs available
- PU protected bumper nose also available

Benefits

- Polyurethane parts are manufactured in-house to strict quality standards
- All parts have exceptional physical properties and chemical resistant qualities
- Will traverse full bore valves
- Will traverse barred tees
- Will negotiate to 1.5D bends



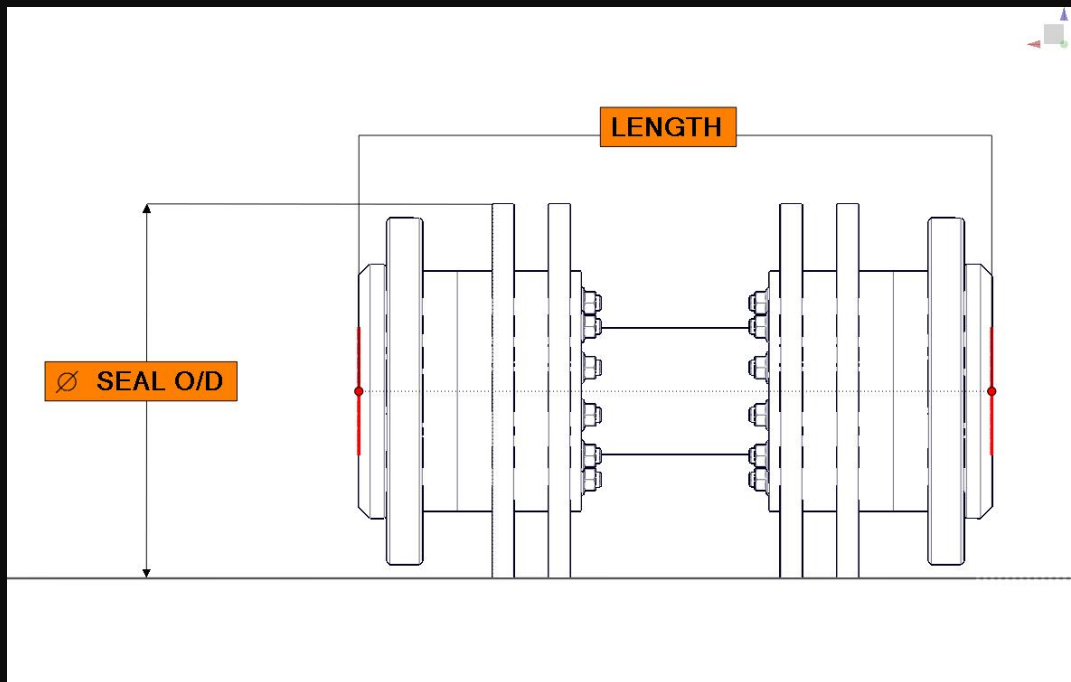
iNPIPE PRODUCTS™

Walkerville Industrial Estate, Catterick, North Yorkshire, United Kingdom, DL9 4RR
www.inpipeproducts.com - +44 (0) 1748 834 577

INPIPE PRODUCTS™ Hi-seal Bi-directional Pig Range

The stated features and benefits are based on the standard range; should you require different materials of construction or sizes please contact the sales department (+44 (0) 1748 834 577).

INPIPE PRODUCTS™ Hi-seal Bi-directional Pigs can be manufactured to suit many disc configurations and with the addition of various accessories can be customised to meet specific client requirements.



Specifications

NS	Ø (SEAL O/D)	LENGTH		NS	Ø (SEAL O/D)	LENGTH
2"	Ø62	139		28"	Ø712	1050
4"	Ø114	240		30"	Ø762	1121
6"	Ø168	323		32"	Ø813	1192
8"	Ø219	394		34"	Ø864	1270
10"	Ø273	545		36"	Ø915	1340
12"	Ø324	617		38"	Ø966	1411
14"	Ø356	548		40"	Ø1016	1482
16"	Ø406	619		42"	Ø1067	1574
18"	Ø457	690		46"	Ø1168	1720
20"	Ø508	761		48"	Ø1220	1777
24"	Ø610	908		56"	Ø1422	2092

All dimensions are in mm; the approximate measurements are based on pig to suit Sch 40 pipe; available for all pipe schedules. Please contact the Sales Department for more information (+44 (0) 1748 834 577).



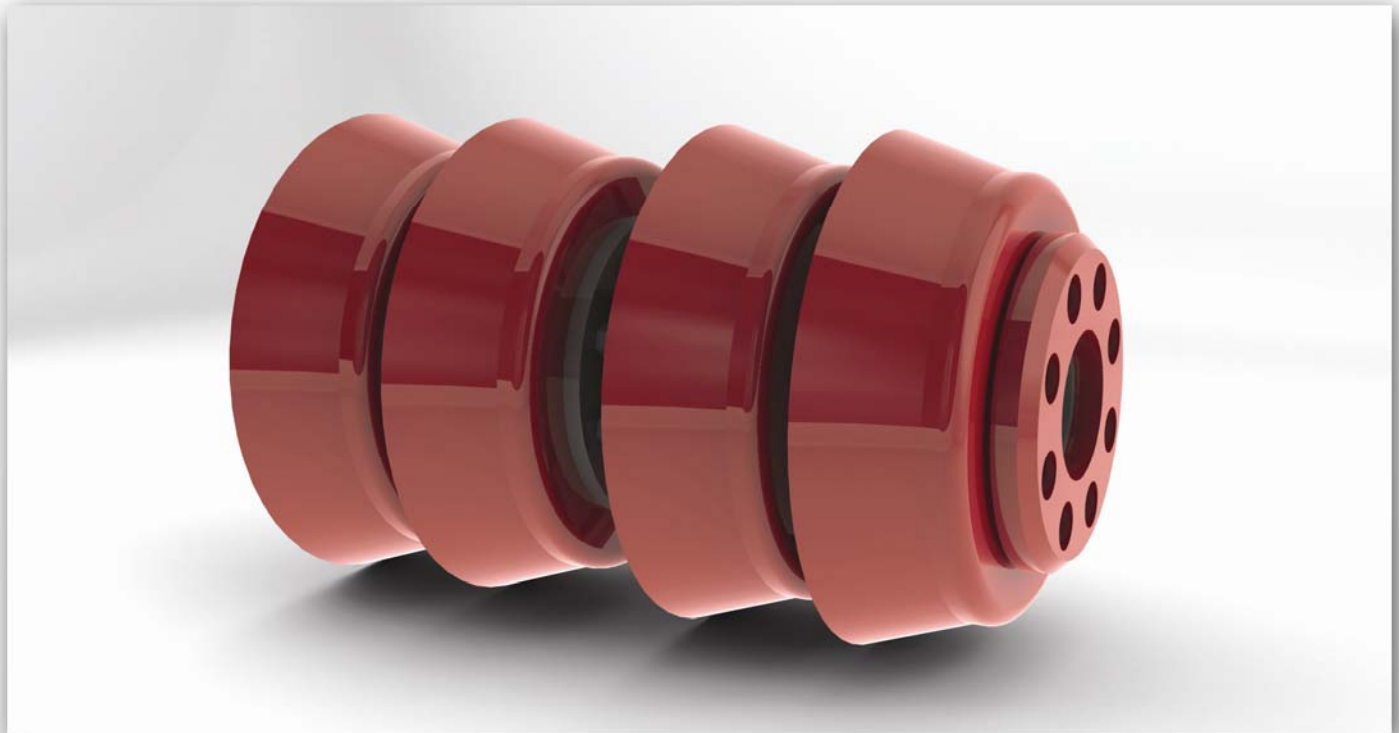
INPIPE PRODUCTS™

Walkerville Industrial Estate, Catterick, North Yorkshire, United Kingdom, DL9 4RR
www.inpipeproducts.com - +44 (0) 1748 834 577



iNPIPE PRODUCTS

DATASHEET - CUP PIGS



Product Description and Functions

iNPIPE PRODUCTS™ Uni-directional Cup Pigs are used in applications such as product separation, batching, displacement, swabbing and line clearance duties. With the addition of accessories, such as brushes, magnets, gauge plates, tracking housings, pluggable by-pass and jetting heads, the cup pig can be used for the commissioning and de-commissioning of pipelines.

With components manufactured from *iNPIPE PRODUCTS™* standard materials, Cup Pigs can withstand distances of up to 700km, dependant on the pipeline condition. If components are manufactured from *iNPIPE PRODUCTS™* Polyplast V systems, Cup Pigs may withstand distances of up to 1000km, dependent on pipeline condition.

Standard Features

- Bodies are manufactured from carbon steel
- Pig Cups are manufactured from Polyurethane
- Cups available in two styles; Standard and Proteus
- Retrieval eye on the front end to facilitate removal
- Multi-bolt and Spindle bodied designs available

Benefits

- Flexible lip allow for minimum by-pass
- Polyurethane mouldings are manufactured in-house to strict quality standards. They have exceptionally good physical and chemical resistant qualities
- High wear and abrasion resistance
- Will traverse full bore valves
- Will traverse barred tees
- Will negotiate to 1.5D bends



iNPIPE PRODUCTS™

Walkerville Industrial Estate, Catterick, North Yorkshire, United Kingdom, DL9 4RR
www.inpipeproducts.com - +44 (0) 1748 834 577